

**BALDOR® • RELIANCE** 

**Product Information Packet**

**ECR9604TR**

**60HP, 1780RPM, 3PH, 60HZ, 365T, A36068M, TEFC**

Part Detail							
Revision:	H	Status:	PRD/A	Change #:		Proprietary:	No
Type:	AC	Elec. Spec:	A36WG3907	CD Diagram:	416820-002	Mfg Plant:	
Mech. Spec:		Layout:	617428-034	Poles:	04	Created Date:	02-03-2015
Base:		Eff. Date:	03-12-2020	Leads:	3#4,6#6		

Specs			
Catalog Number:	ECR9604TR	Feedback Device:	NO FEEDBACK
Enclosure:	TEFC	Heater Indicator:	No Heater
Frame:	364T	Insulation Class:	F
Frame Material:	Iron	Inverter Code:	Not Inverter
Output @ Frequency:	60.000 HP @ 60 HZ	KVA Code:	H
Synchronous Speed @ Frequency:	1800 RPM @ 60 HZ	Lifting Lugs:	No Lifting Lugs
Voltage @ Frequency:	230.0 V @ 60 HZ	Motor Lead Quantity/Wire Size:	3 @ 4 AWG
	460.0 V @ 60 HZ	Motor Type:	A36068M
XP Class and Group:	None	Mounting Arrangement:	F1
XP Division:	Not Applicable	Power Factor:	85
Agency Approvals:	CSA EEV	Product Family:	Crusher / Chipper
Auxillary Box:	No Auxillary Box	Pulley End Bearing Type:	Ball
Base Indicator:	Rigid	Pulley Face Code:	Standard
Bearing Grease Type:	Polyrex EM (-20F +300F)	Shaft Ground Indicator:	No Shaft Grounding
Constant Torque Speed Range:	6-60	Shaft Rotation:	Reversible
Current @ Voltage:	140.000 A @ 230.0 V	Shaft Slinger Indicator:	No Slinger
	69.900 A @ 460.0 V	Speed Code:	Single Speed
Design Code:	A	Motor Standards:	NEMA

<b>Drip Cover:</b>	No Drip Cover	<b>Starting Method:</b>	Direct on line
<b>Duty Rating:</b>	CONT	<b>Thermal Device - Bearing:</b>	None
		<b>Thermal Device - Winding:</b>	None

<b>Nameplate 000613007PV</b>										
<b>CAT NO</b>	ECR9604TR		<b>SPEC NO.</b>	P36G3503		<b>DESIGN</b>	A			
<b>HP</b>	60	<b>AMPS</b>	140/69.9		<b>VOLTS</b>	230/460		<b>SF</b>	1.25	
<b>RPM</b>	1780	<b>RPM MAX</b>	3600		<b>HZ</b>	60	<b>AMB</b>	40		
<b>D.E. BRG.DATA</b>	NU313		<b>O.D.E. BRG.DATA</b>	6313		<b>PH</b>	3		<b>DUTY</b>	CONT
<b>FRAME</b>	364T		<b>I.P.</b>	55		<b>TYPE</b>	P		<b>ENCL</b>	TEFC
<b>POWER FACTOR</b>	85		<b>3/4 LOAD EFF.</b>	95.3		<b>CODE</b>	H		<b>NEMA NOM EFFICIENCY</b>	95
<b>CHP HZ</b>	60-90		<b>CT HZ</b>	6-60		<b>VT HZ</b>	6-60			
<b>SER.NO.</b>			<b>MOTOR WEIGHT</b>							
	1.25SF AMPS= 173/86									

Nameplate NP2496L

MOBIL SHC -220 GREASE

Parts List		
Part Number	Description	Quantity
SA293591	SA P36G3503	1.000 EA
RA279684	RA P36G3503	1.000 EA
000613007PV	SS NP, CRUSHER DUTY, EMBOSSSED,MAIN MOTOR	1.000 EA
000692000VD	LABEL WARNING	1.000 EA
032018008AK	HHCS 1/4-20X1 PLATED	4.000 EA
032018012DK	HHCS 1/2-13X1-1/2 PLTD.	4.000 EA
032018024CK	HHCS 3/8-16X3 PLTD.	3.000 EA
034180012DA	KEY 1X4X1/4X1-1/2 L	1.000 EA
034530052AB	P/NIP 1/8X6-1/2 GALV.	1.000 EA
702676001C	FAN 360	1.000 EA
078559034A	+F/C A 078559001A - 360	1.000 EA
085922073B	BRKT 360 085922072WCC KB	1.000 EA
415045002E	SLGR	1.000 EA
415072001B	CLAMP	1.000 EA
415096002A	CPLG 1/8 HEX TYPE	1.000 EA
412118006A	DRAIN	1.000 EA
032018012DK	HHCS 1/2-13X1-1/2 PLTD.	4.000 EA
032018024CK	HHCS 3/8-16X3 PLTD.	3.000 EA
034530020AB	P/NIP 1/8X2-1/2 PLTED	1.000 EA
085922073B	BRKT 360 085922072WCC KB	1.000 EA
415045002E	SLGR	1.000 EA
415096002A	CPLG 1/8 HEX TYPE	1.000 EA
412118006A	DRAIN	1.000 EA
032018010CK	HHCS 3/8-16X1-1/4 PLTD. 032018010CR	4.000 EA

Parts List (continued)		
Part Number	Description	Quantity
033512008LB	HHTTS 1/4-20X1 PLATED	4.000 EA
034000014AB	WSH ID.406 OD.812 TH.065	4.000 EA
035000001A	ALFTG 1/8" 1610-BL	1.000 EA
035000001A	ALFTG 1/8" 1610-BL	1.000 EA
065776000C	GASKET,MAIN CBOX, 320-400	1.000 EA
067053000B	GASK 320-400	1.000 EA
076708000BB	CONDUIT BOX-360	1.000 EA
076709000A	C/B Cover - 360	1.000 EA
406099000A	PLUG - FAN COVER 320-440	1.000 EA
415000103H	T/LUG #2AWG-4/0AWG	1.000 EA
418150003A	GREASE FITTING CAP	1.000 EA
418150003A	GREASE FITTING CAP	1.000 EA
033775004EA	DRSCR #6-1/4 304 S.S.	4.000 EA
034180034HA	KEY 5/8X5/8X4-1/4 L	1.000 EA
MG1025G96	WILKOFASST SG, 779.7048, MOUSE GRAY #7048	0.250 GA
421948032	LABEL, MYLAR	1.000 EA
004824015AP	GREASE MOBILITH SHC 220	0.540 LB
000692000RT	N/P	1.000 EA
047174001Z	EXT SNAP RING	1.000 EA
NP2496L	MOTOR LUBE NAMEPLATE	1.000 EA
000613006PU	N/P (RELEASE QTY 10,000) UL CSA LABEL	1.000 EA
034001016AB	WSHR .562ID 1.375OD .109	1.000 EA
034001014AB	FLAT WASHER 3/8"PLATED	1.000 EA
415070001A	RUBBER MOUNT 3X3X1 THICK	1.000 EA

Product Information Packet: ECR9604TR - 60HP,1780RPM,3PH,60HZ,365T,A36068M,TEFC

032018024CK	HHCS 3/8-16X3 PLTD.	1.000 EA
032509020C	CARRIAGE BOLT - 360	3.000 EA
604797011R	320 FR. ROLLER BEARING MOTOR SHAFT	1.000 EA
HW1000A32	5/16 FL WASHER WIDE, ID=.344, OD=1.125	3.000 EA
PK5004A01	WOODEN BASE ASSY, 314-316 FR.	1.000 EA
034530032BB	P/NIP 1/4X4" SCHED 40	1.000 EA
034631002AB	BUSH 1/4 TO 1/8 PLTD.	1.000 EA
035000001G	GREASE RELIEF FITTING, ALEMITE 317400	1.000 EA
034631002AB	BUSH 1/4 TO 1/8 PLTD.	1.000 EA
034530020BB	P/NIP 1/4X2-1/2 PLATED	1.000 EA
035000001G	GREASE RELIEF FITTING, ALEMITE 317400	1.000 EA
14PA1000	PACKAGING 314 GROUP COMBINED PRINT	1.000 EA
032018005DL	1/2-13 X 5/8 SILICON BRONZE HHCS	1.000 EA

REL. S.O.	FRAME	HP	TYPE	PHASE/HERTZ	RPM	VOLTS
	364TZ	60	P	3/60	1780	230/460
AMPS	DUTY	AMB °C/ INSUL.	S.F.	NEMA DESIGN	CODE LETTER	ENCL.
140/69.9	CONT	40/F	1.25	A	H	TEFC
E/S	ROTOR	TEST S.O.	TEST DATE	STATOR RES @25 °C (BETWEEN LINES)		
491620	418141038ZE	---	---	.0208 / .0832		

PERFORMANCE


LOAD	HP	AMPERES	RPM	POWER FACTOR %	EFFICIENCY %
NO LOAD	0	24.0	1800	4.22	0
1/4	15.0	29.5	1795	51.6	92.5
2/4	30.0	40.5	1791	73.1	95.0
3/4	45.0	54.4	1786	81.3	95.3
4/4	60.0	69.9	1780	84.6	95.0
5/4	75.0	86.1	1775	86.4	94.4

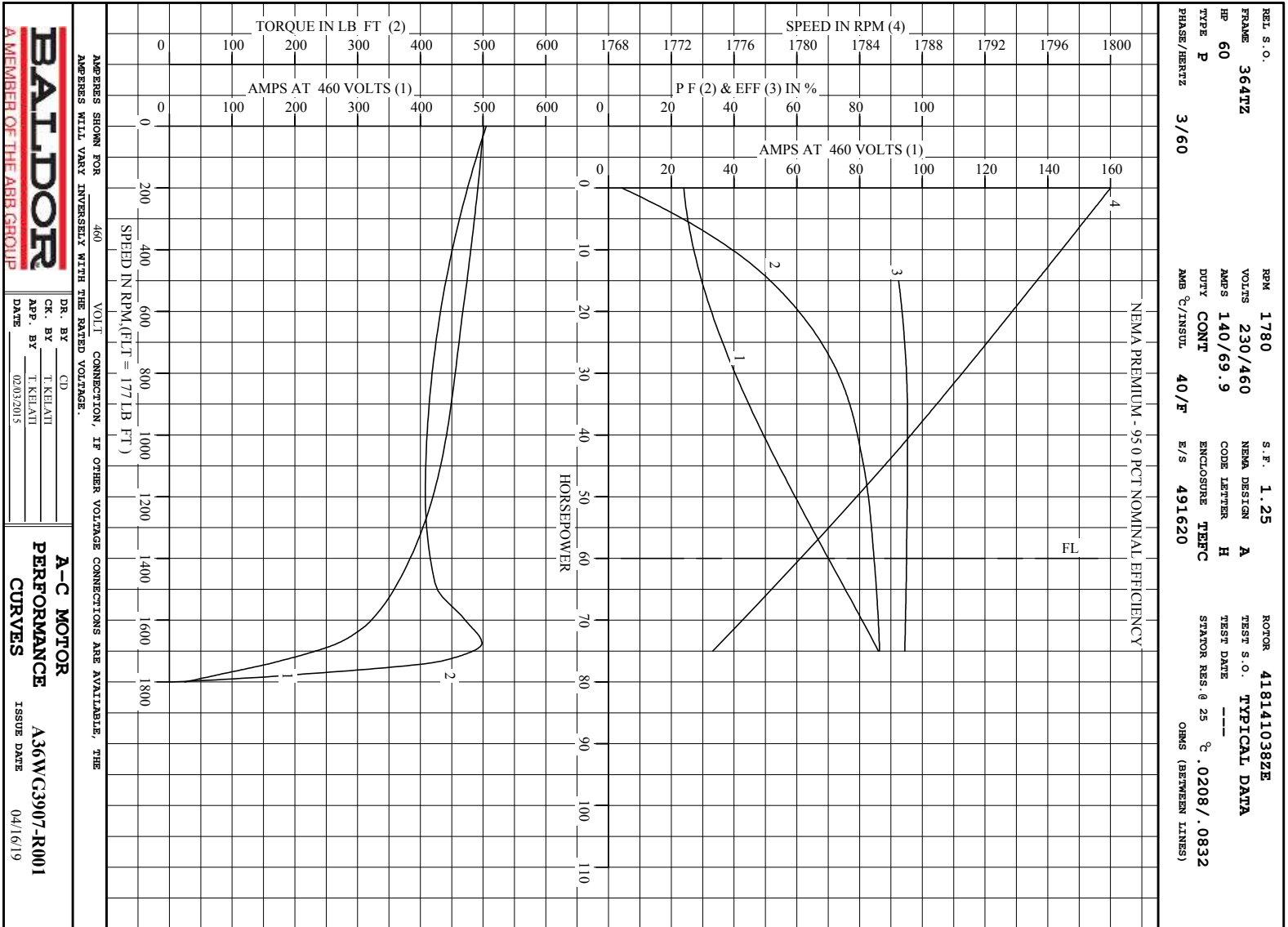
SPEED TORQUE

	RPM	TORQUE % FULL LOAD	TORQUE LB.-FT.	AMPERES
LOCKED ROTOR	0	285	505	501
PULL UP	1200	230	408	420
BREAKDOWN	1675	281	498	268
FULL LOAD	1780	100	177	69.9

AMPERES SHOWN FOR 460. VOLT CONNECTION. IF OTHER VOLTAGE CONNECTIONS ARE AVAILABLE, THE AMPERES WILL VARY INVERSELY WITH THE RATED VOLTAGE

REMARKS: TYPICAL DATA  
NEMA PREMIUM - 95.0 PCT NOMINAL EFFICIENCY

 A MEMBER OF THE ABB GROUP	DR. BY	CD	<b>A-C MOTOR</b> <b>PERFORMANCE DATA</b> <b>A36WG3907-R001</b> ISSUE DATE 04/16/19
	CR. BY	T. RELANT	
	APP. BY	T. RELANT	
	DATE	02/03/2015	

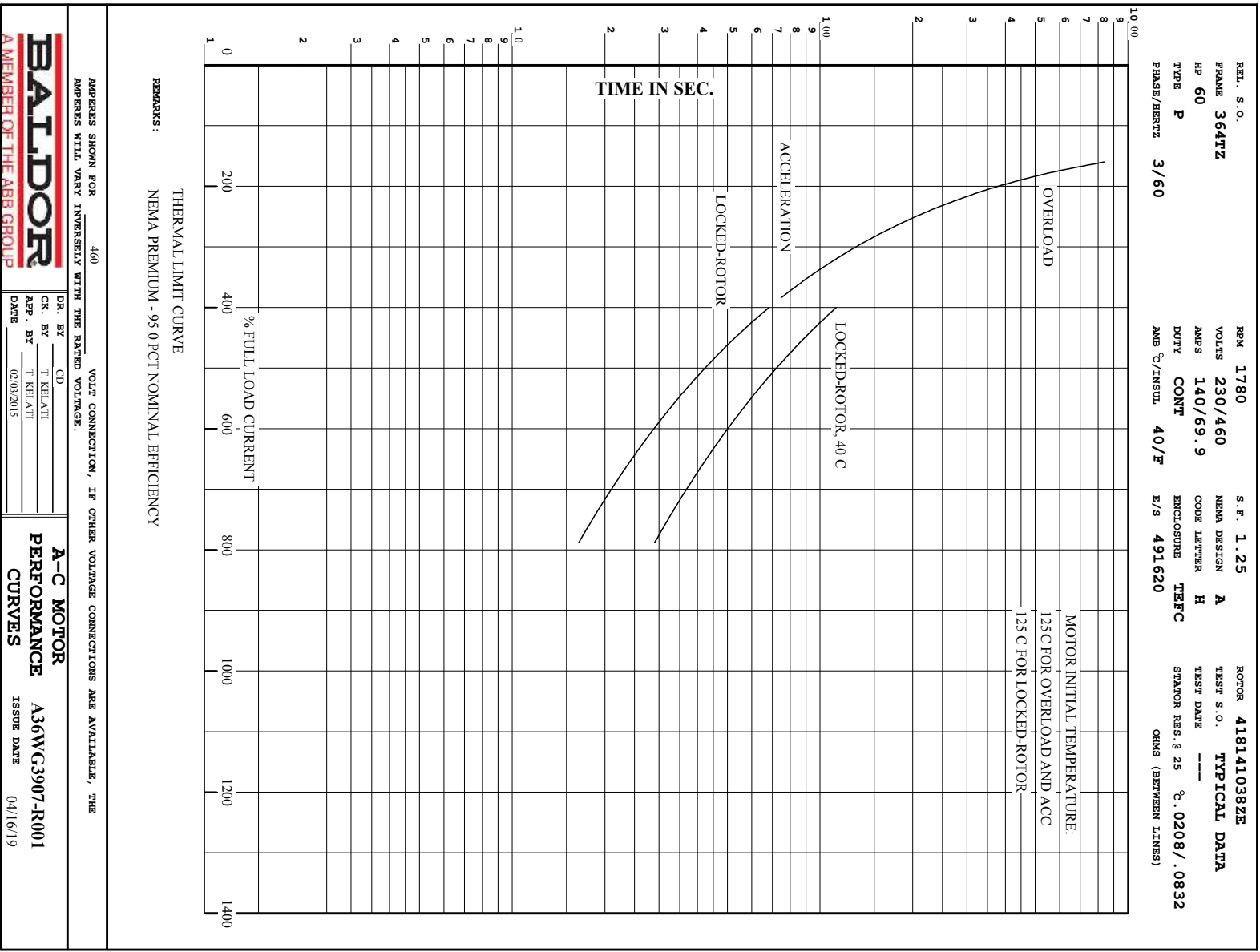


**BALDOR**  
A MEMBER OF THE ABB GROUP

DR. BY CD  
 CK. BY T. KEHATI  
 APP. BY T. KEHATI  
 DATE 02/03/2015

**A-C MOTOR**  
**PERFORMANCE**  
**CURVES**  
 A36WC3907-R001  
 ISSUE DATE 04/16/19

Printed on 4/16/19 9:24 @ bengap01.baldor.com

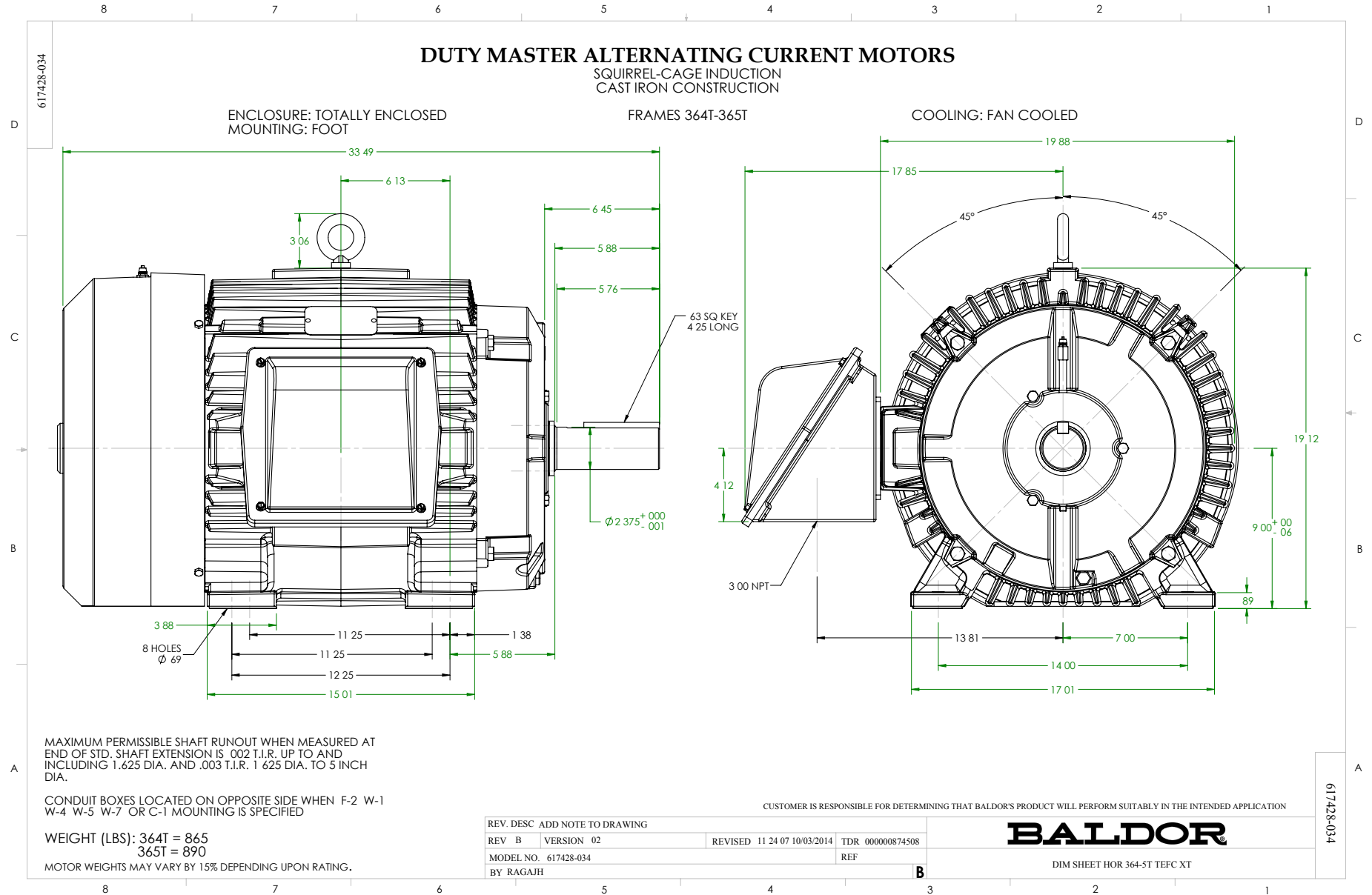


REMARKS: THERMAL LIMIT CURVE  
NEMA PREMIUM - 95.0 PCT NOMINAL EFFICIENCY

AMPERES SHOWN FOR 460 VOLT CONNECTION, IF OTHER VOLTAGE CONNECTIONS ARE AVAILABLE, THE AMPERES WILL VARY INVERSELY WITH THE RATED VOLTAGE.

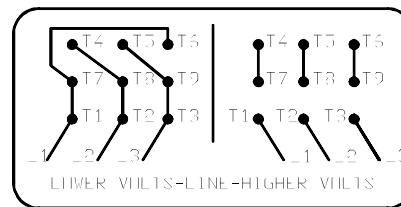
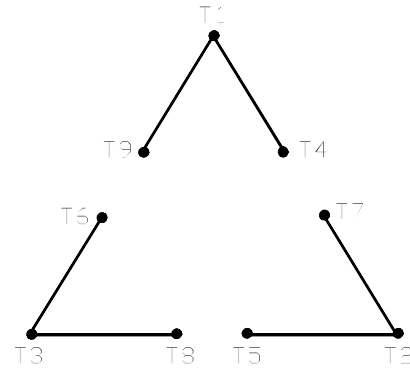
**BALDOR**  
A MEMBER OF THE ABB GROUP

DR. BY	CD	<b>A-C MOTOR PERFORMANCE CURVES</b>
CK. BY	T. KHALI	
APP. BY	T. KHALI	
DATE	02/03/2015	A36WG3907-R001 ISSUE DATE 04/16/19



416820-002

A-C MOTOR  
 CONNECTION DIAGRAM  
 STANDARD 9 LEAD DELTA-CONNECTED



(N.P. 1575-B)

416820-002

REV. DESC: FONT CHANGE FOR PDF SEARCHABLE		
REV. LTR: A	VERSION: 01	TDR: 000001009382
FILE: \MGA\00000\661	REVISED: 02:46:19 02/13/2020	BY: MGHMTT
MTL: -	⊙ □	

**BALDOR - RELIANCE®**

CONN DIAG - STANDARD 9 LEAD, DELTA-CONNECTED

SH 1 of 1

Marketing maintained PDF of MN408:

[MN408?ManNumber=MN408](#)

Marketing maintained PDF of MN416:

[MN416?ManNumber=MN416](#)